

Second Public Consultation

Talayan STP

Wastewater Treatment Facility

12 December 2011

Barangay Sto. Domingo, Quezon City


Objective

- 🌐 To update the Quezon City Government of the proposed Project
- 🌐 To seek government support and assistance in the implementation of the project





Basis of Sewerage and Sanitation Master Plan

- **Concession Agreement**
 - **Maynilad's commitment to help protect the environment**
 - **Supreme Court Decision of 2008**
 - Prioritize major river systems considered as hot spots
 - 50% reduction in BOD loading in Manila Bay area by 2015
- 

San Juan River Basin Project

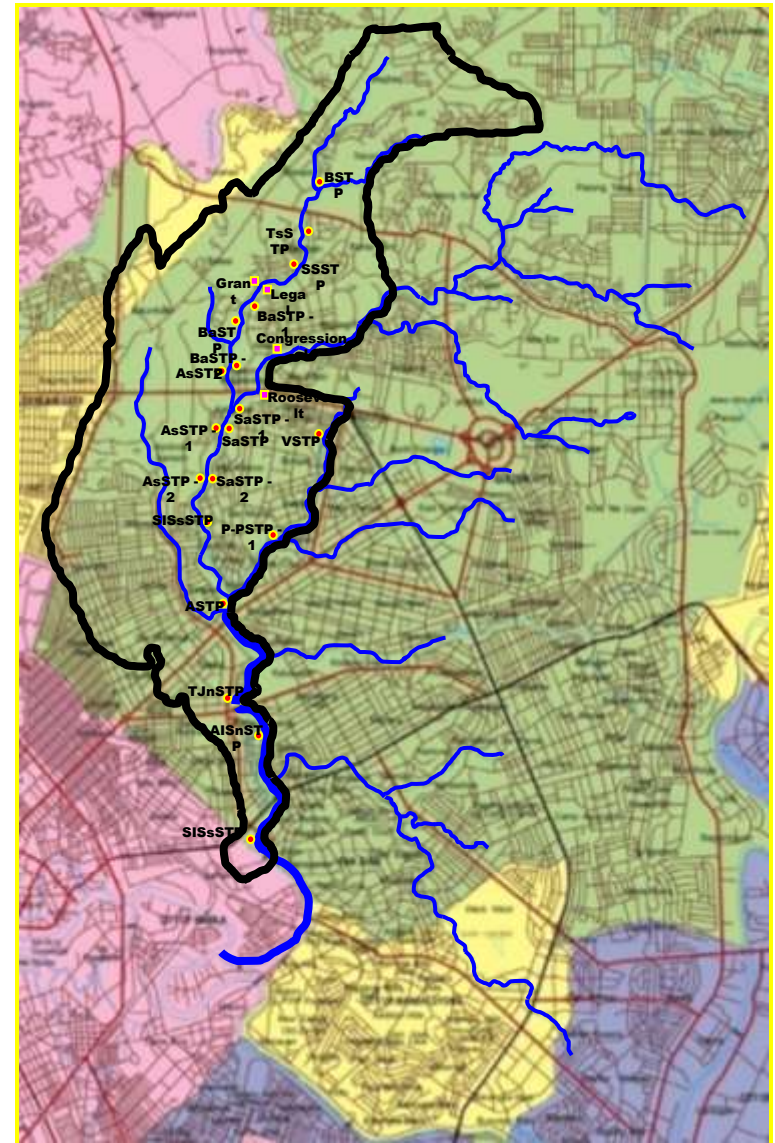
- ❖ Located in Quezon City
- ❖ Total Area: ~ 9,470 ha; ~ 2,490 ha under MWSI
- ❖ Some parts are being served by Communal Septic Tanks
 1. Hereford, Project 8
 2. Legal, Project 8
 3. Grant, Project 8
 4. Roosevelt, Project 7
 5. Road A, Project 7

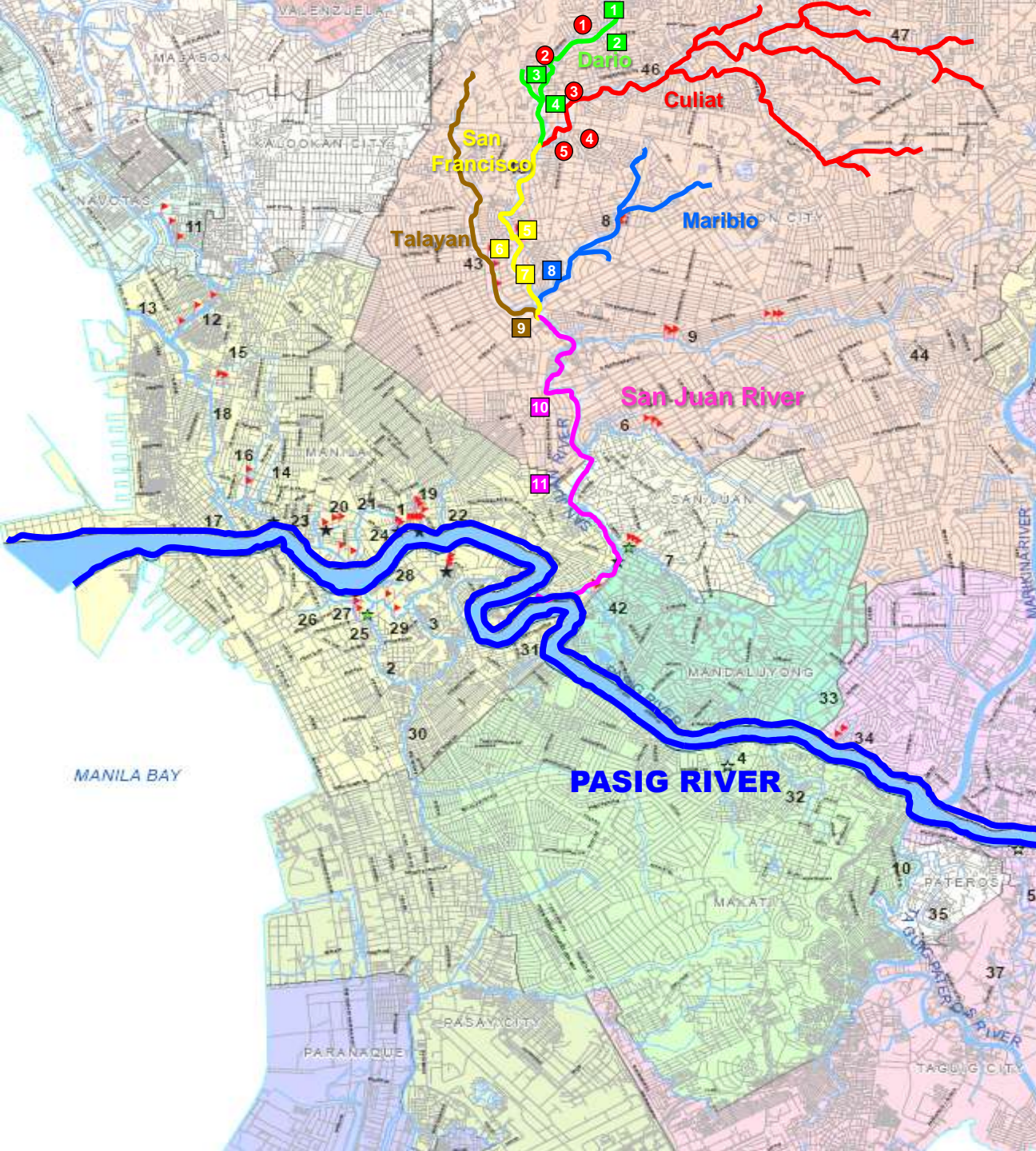


2009 - 2012:

- ❖ Upgrading of 5 communal septic tanks
 - 3 implemented from 2009 – 2010
 - 2 implemented from 2010 - 2011
- ❖ 13 wastewater treatment plants
 - With combined capacity ~ 72,000CMD
 - 2009 – Finalize the feasibility study and start with detailed design of proposed facilities; 2010 start of construction

100% Served End of 2012
Total population ~ 570.000





STP	CAPACITY (m ³)	POP'N SERVED
1. BAGBAG	10,400	80,000
2. TANDANG SORA	1,170	9,000
3. BAESA	390	3,000
4. BAHAY TORO	4,680	36,000

STP	CAPACITY (m ³)	POP'N SERVED
1. LEGAL	410	3,200
2. GRANT	625	4,800
3. CONGRESSIONAL	570	4,400
4. PROJECT 7	2,400	18,500
5. ROOSEVELT	100	800

STP	CAPACITY (m ³)	POP'N SERVED
5. SAN ANTONIO	3,300	25,400
6. SAMSON 2	1,800	14,100
7. DEL MONTE	3,500	27,000

STP	CAPACITY (m ³)	POP'N SERVED
8. PALTOK	4,800	37,000

STP	CAPACITY (m ³)	POP'N SERVED
9. TALAYAN	15,400	118,000

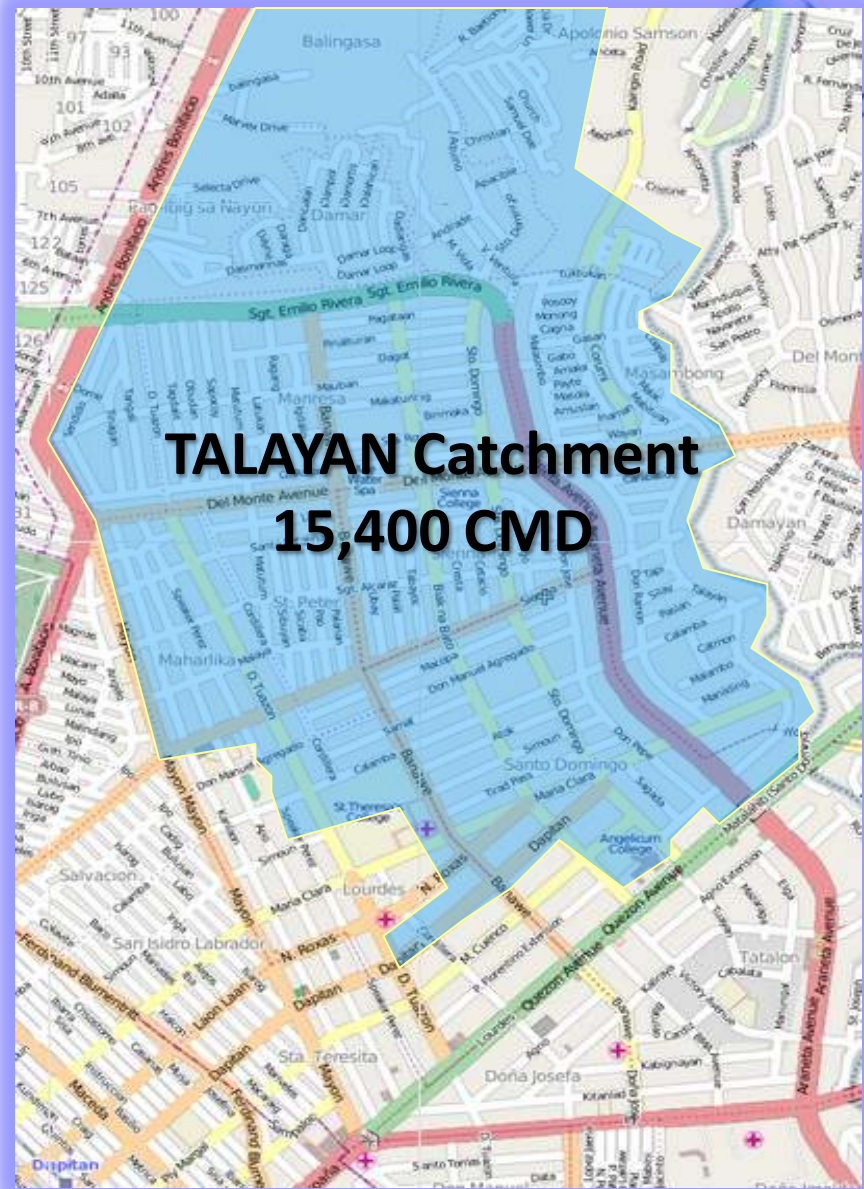
STP	CAPACITY (m ³)	POP'N SERVED
10. TATALON	8,000	62,000
11. DOÑA IMELDA	9,400	72,000

LAGUNA DE BAY

Talayan Catchment

Capacity

15400 cubic
meters/day



Talayan Catchment

Parameter	Actual Value, mg/L	DENR Standard (Class C water), mg/L
BOD	65	50
TSS	12.2	70
Oil and Grease	6	5
Total Coliform (MPN/100ml)	54 x 10 ⁶	10,000

TALAYAN STP



On-going Clearing Operations

Project Updates

TALAYAN STP

12.06.11



Water Sampling

TALAYAN STP

Agenda	Date Completed
Feasibility Study	April 2010
Plant Visit w/ QC LGU	April 12, 2011
1 st Public Consultation	April 14, 2011
Conveyance Detail Design	On-going
Clearing Operation	On-going
Water Quality Sampling	December 6, 2011
2 nd Public Consultation	December 12, 2011

WHAT'S NEXT?

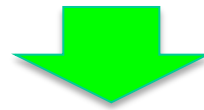
- Fast track all construction related activities
- Do necessary coordination works
 - Preparation of communication plan
 - Meeting with stakeholders
 - Community
 - LGU
 - MMDA
 - Preparation & finalization of MOUs with LGUs & MMDA

Implementation Scheme



Integrated Approach

Objective: To ensure project sustainability and maximize environmental benefits



Partnering with all stakeholders

LGUs'/Communities/NGOs' – raise awareness, get support and acceptance, solicit cooperation and instill “malasakit”

Effective wastewater management

Effective Solid Waste Management

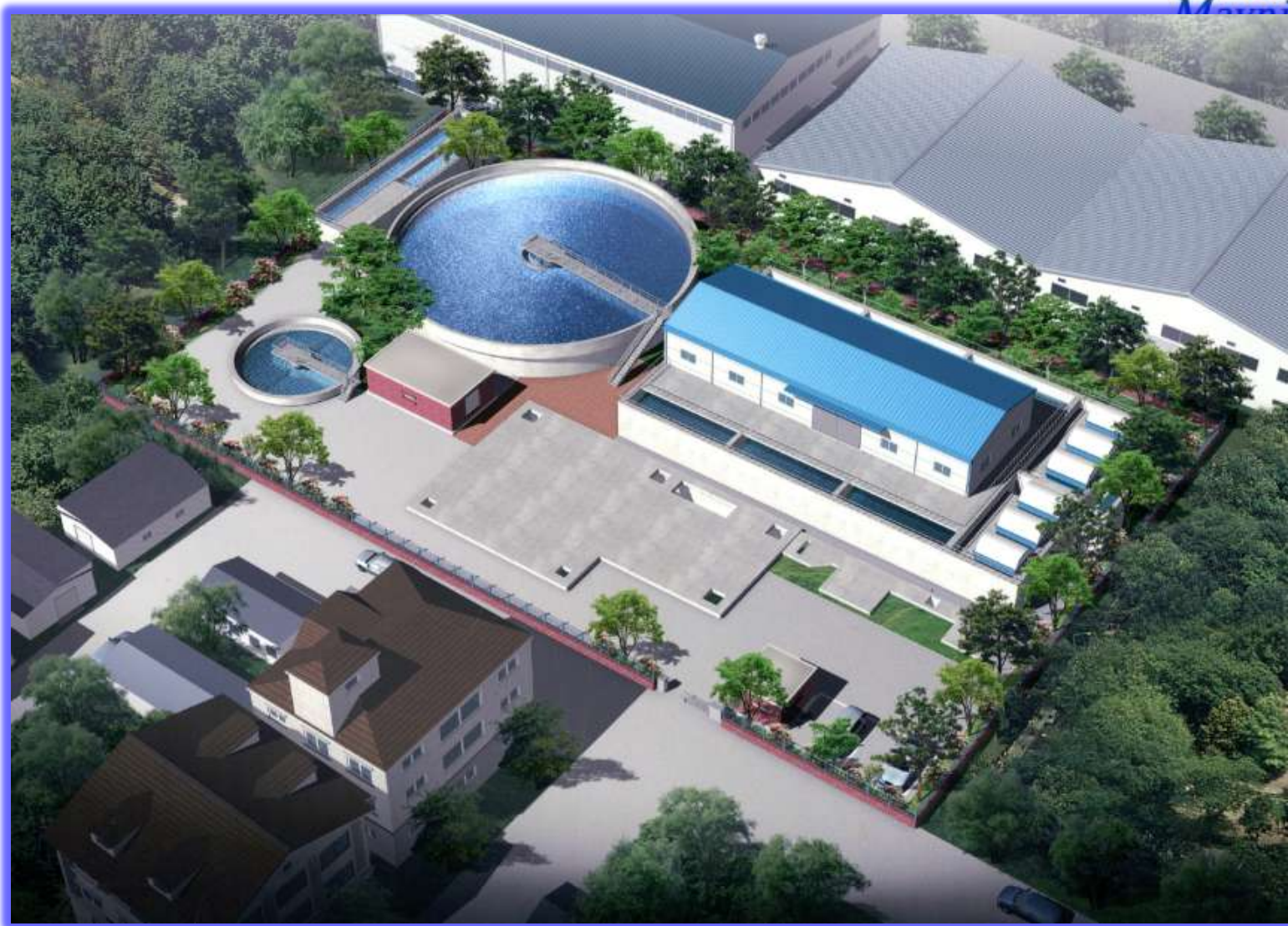
Effective Drainage Maintenance

Community

- **Ensure proper use & maintenance of drainage system**
- **Proper solid waste disposal**
- **Report illegal disposal of wastewater**
- **Maintenance of cleanliness & proper hygiene**

Limitations/Challenges

- **Poor garbage collection**
- **Poor drainage maintenance**
- **Gaps within drainage**
- **Poorly designed and constructed drainage system**
- **Failure to secure/acquire stp sites/lot within the target period**
- **Informal settlers in esteros and creeks**



Perspective View

Thank you!



Maynilad

Sewerage

refers to the system that collects, treats, and dispose wastewater.

Sewage/Wastewater

Human wastes, washings from kitchen, laundry, and other cleaning activities and process water coming from industrial plants

Sewer

refers to pipe that conveys wastewater

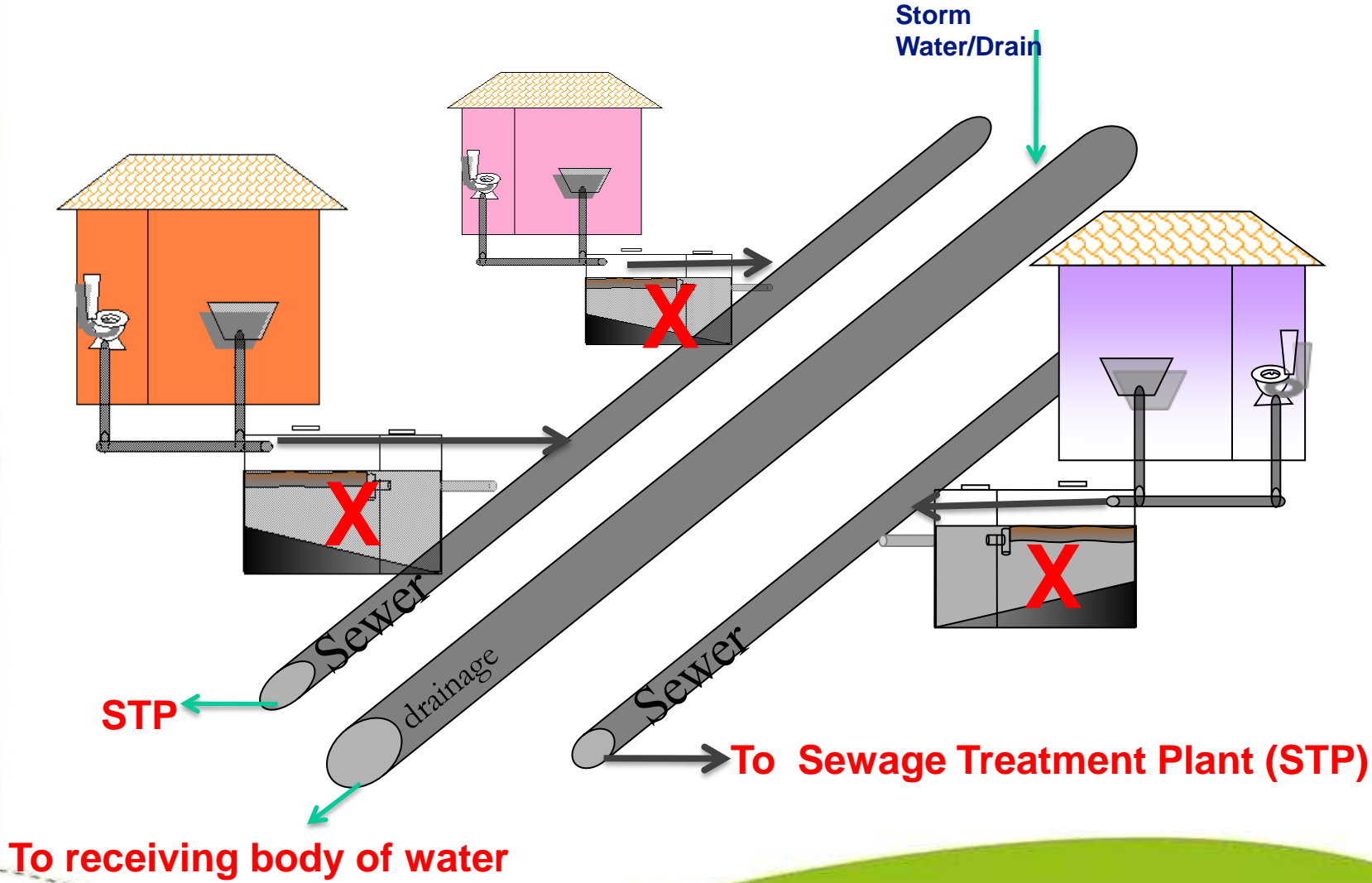
Sanitation

refers to system utilizing individual septic tanks to provide partial treatment of wastewater prior to discharge

Septage

refers to the mixture of liquid and solids in a septic tank, which becomes a source of pollution when disposed without effective treatment

Sewered Area:



Types of Sewerage System

Separate System

Collects wastewater into a sanitary sewer and storm water into a storm sewer/drainage line.

Combined System

Collects both wastewater and storm water with a single pipe called a combined sewer.